

**MARGO** | 

MARGO – Air Cargo Management

MARGO suite of solutions has been designed for the needs of airlines in demand for reliable, yet easy-to-implement airline cargo solutions. MARGO enables airlines to better monitor cargo sales performance, smoothen handling processes and access real-time cargo revenue information. MARGO comprises cargo management applications as well as a proven cargo revenue accounting software. Highly modular and scalable Margo suite of solution provides a complete end-to-end control over commercial, operation and revenue accounting processes to all airline sizes and business models.

BENEFITS



Synchronization

Synchronize operational and accounting activities



Revenue Protection

Ensure revenue protection by preventing risks of errors and frauds



Fast Revenue Recognition

Optimize revenue through accurate invoicing and billing

MARGO

AIR CARGO MANAGEMENT

BOOKING

Ensure Optimum Cargo capacity

AWB

Track AWB through Lifecycle
Keep Sales and uplift records

CRA

Revenue Recognition & Protection
Accurate & Timely Reporting

Fully compliant with the latest industry standards, MARGO BOOKING is a web-based application simplifying the whole cargo booking process, and optimizing cargo planning and revenue. MARGO BOOKING functions as a standalone bookings management solution, and also integrates with our Air Waybill Management and Cargo Revenue Accounting systems.

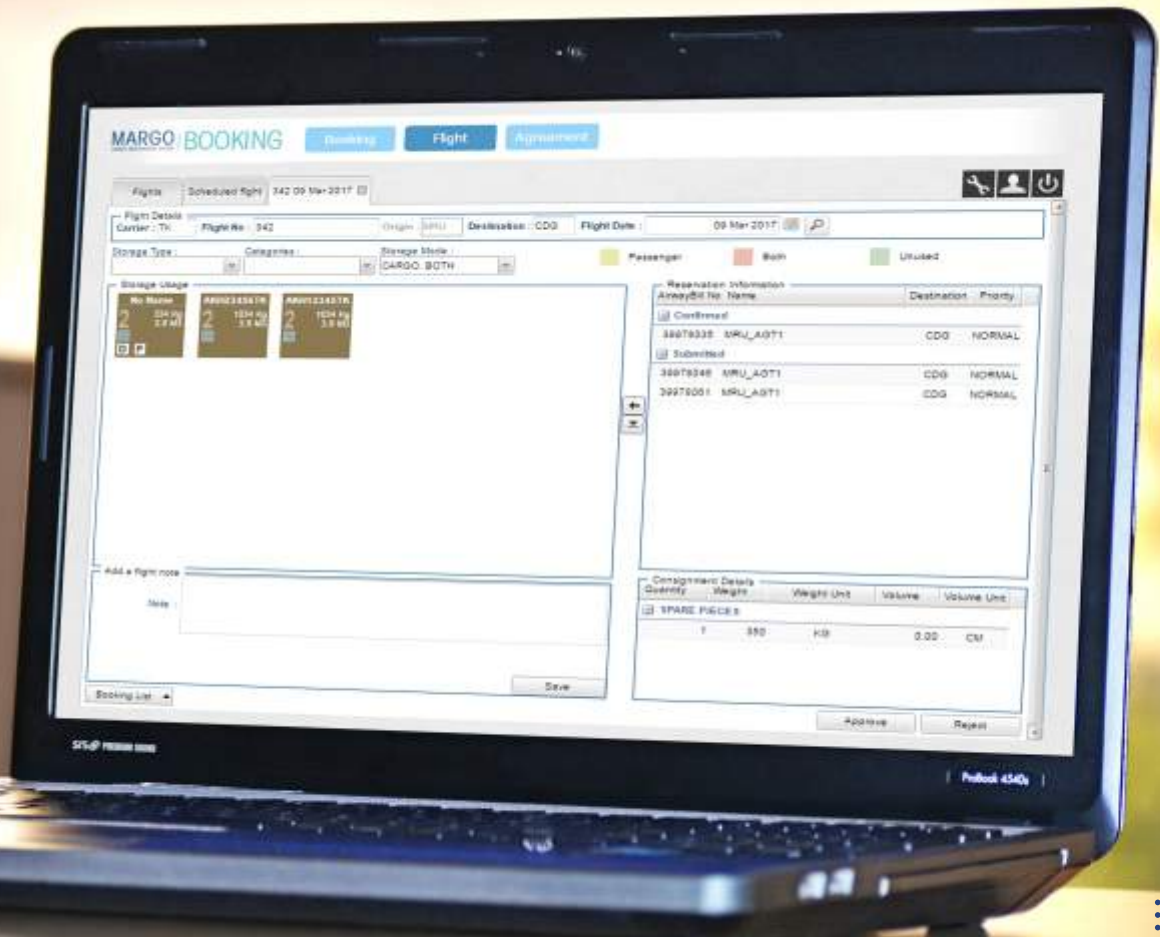
Main features

Booking engine

- › Online booking engine for shippers
- › Automated processing of electronic Booking (FFR)
- › Easily estimates cargo capacity and flight availability based on flight schedule
- › Consignment and pieces details management
- › Automated AWB number allocation based on user's AWB stock range
- › Bookings status notifications
- › Customizable bookings approval (manual/automatic) per cargo category

Booking manager

- › Booking manager interface for cargo managers
- › Flight schedule and cargo capacity management
- › Passenger load factor and baggage charge adjustment
- › Aircraft type and storage configuration
- › Reservations dashboard
- › Bookings manual approval or rejection for specific consignments
- › Flights dashboard for bookings management (storage allocation, rejection, transfer)



Designed for airline's own stations and ground handling agents. MARGO AWB covers operational processes from AWB issuance to delivery. With greater visibility on your shipment lifecycle, MARGO AWB drives your airline towards better business decisions. MARGO AWB functions as a standalone AWB management solution, and also integrates with our MARGO BOOKING and MARGO Cargo Revenue Accounting systems.

Main features

Air Waybill issuance

- › Air Waybill stock management
- › Multiairline Air Waybill issuance capabilities
- › Master Air Waybill issuance
- › Automatic generation of Air Waybill Number
- › Shipper & consignee quick search & frequent list
- › Multicurrency supported, including exchange rates management
- › Flight assignment from automated flight schedule imports
- › Capture of consignment dimensions and weight, including weighbridge connectivity
- › Integrated Volumetric Weight Calculator
- › Cargo tracking at piece level with barcode scan technology
- › Payment capture and cash register management tools

Reporting and interfaces

- › Reports of Air Waybills issued at station and agent level
- › Sales & Uplif Reports by Origin, destination & nature of goods
- › Station Activity report (Sales by destination, freight forwarder, etc...)
- › Reconciliation of collected AWB and payments
- › Industry standard compliant (FWB, FFM, etc)
- › Interface with MARGO cargo revenue accounting for revenue processing



MARGO CRA is the airline cargo revenue accounting system of our MARGO suite of solutions. Built with a robust prorate engine and regularly updated to the latest industry standards, MARGO CRA enables AWB and mail revenue processing to rigorously protect cargo carriers and passenger airlines' cargo revenue, providing them with insightful analytics

Main Features

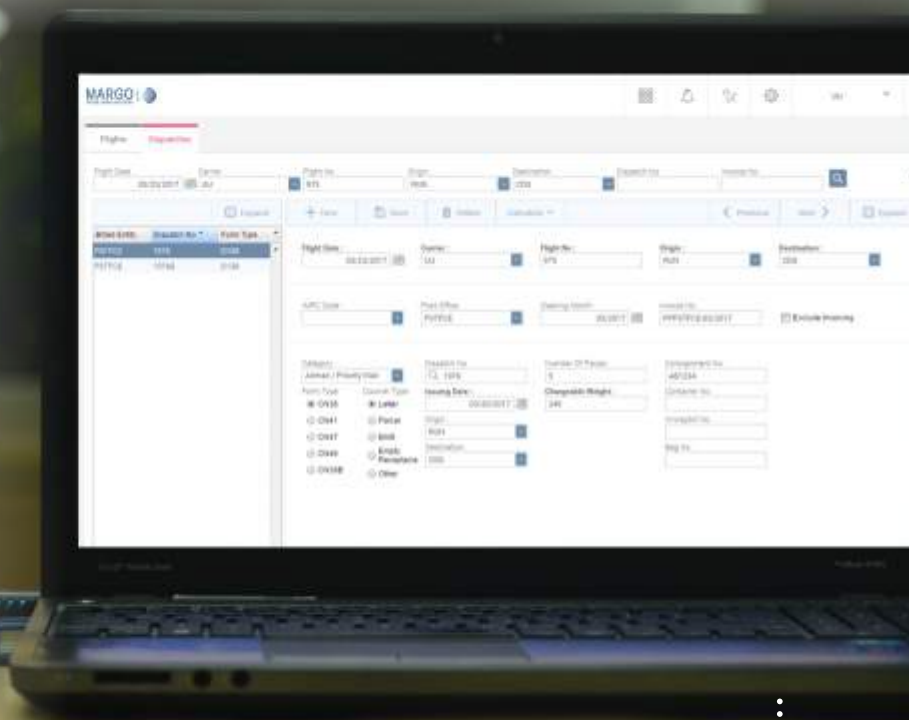
Sales Processing

- › AWB stock management & control
- › Automated AWB proration as per industry standards (MPA-C / proviso / SPA)
- › Other charges & rates management (TACT / ad-hoc / class / contract / special rates)
- › Charges assignment on batch AWB
- › Mixed charges code management
- › Corrective charges advice (CCA) management
- › Corporate customer billing
- › CASS billing
- › Trucking sector provision
- › Sales vs. uses matching and accounting of revenue adjustments
- › View AWB lifecycle via the Air Waybill Account

Mail processing

- › Special rate agreements with general postal authorities
- › Standard universal postal union (UPU) rates
- › Import of mail dispatches from pre-defined CSV template
- › Automatic calculation of billing amounts
- › Processing of mail dispatch and billing
- › Mail rejections
- › Mail authorities invoicing (optional feature)
- › Batch audit on AWB & mail dispatches
- › AWB rate charge audit at consignment level
- › AWB commission / other charges audit
- › Mail rate audit & dispatches
- › Automatic ADM/ACM creation on AWB sales and transmission to CASS

AWB & Mail auditing



Flown reconciliation

- › Cargo manifest capture and control
- › Part-shipment management
- › Determination of revenue and billing to consignees/airlines
- › Sales agents billing based on flown documents
- › GSA overriding commissions

Data integration & quality controls

- › Automatic data integration from MARGO BOOKING and MARGO AWB solutions
- › Automated data capture from third-party systems with CIMP messages (FWB, FFM, etc.)
- › FlightOps and DCS messages integration
- › Automated quality controls on KPIs & email alerts
- › Unreported AWB sales and flown control
- › Unbilled mail dispatches control
- › Productivity reports by user

Interline settlement

- › SIS compliant
- › Catering for all interline scenarios (Codeshare, SPA, MPA, etc.)
- › Automated inward billing process
- › Automatic inward invoice proration (MPA-C / proviso / SPA)
- › Accurate expected billings computation & comparison
- › Automatic rejections
- › Outward billing PP/CC (prime, rejection, billing & credit memo, correspondence)
- › Inward and outward time limit checks and extensions
- › Invoice Adjustment Processing

Reporting and interfaces

- › Customizable General Ledger interface to Chart of Accounts
- › Daily cargo and mail revenue reports
- › Statistical reports on sales and revenue by route, origin, etc.
- › Own and other airline revenue reports by market, route, etc.
- › Custom-built interfaces for data warehouse, business intelligence, etc.



“ Aircalin decided to adopt MARGO CRA in order to simplify our cargo revenue accounting processes while working in a similar environment than the one provided in EDGAR PRA. I would recommend MARGO CRA to other airlines, especially for the responsiveness provided by Maureva in terms of software development. The close cooperation and short resolution times with MARGO CRA's support team are much appreciated. ”

Revenue Accounting Manager / Aircalin



OUR CUSTOMERS



+43 customers
across the world



About Us

Maureva is a leading software and service solutions provider for the airline industry, operating for more than 19 years in highly specialized fields of activity, including airline revenue accounting, flight scheduling and crew management, business intelligence for airlines and cargo management.

With a strong focus on the uniqueness of each airline, we ensure that our solutions provide the right level of adaptation to integrate specific business requirements, while always adhering to industry standards and providing record efficiency levels.

Strategically based in the Indian Ocean, with offices on the innovative, business-friendly and beautiful islands of Reunion and Mauritius, Maureva has privileged access to Africa, Asia and Europe, while providing a fully bilingual environment in English and French.

Our company unites more than two hundred passionate business and information technology professionals who share an extensive knowledge of the airline industry, and are fully dedicated to the design, development, support, and processing of our solutions.

As an IATA strategic partner, we are proud to serve this industry and more than forty prestigious airline companies stretching all over the five continents, and to enable them to strengthen their competitive advantage, lower their costs and gain easy access to comprehensive insight analytics.



Address: 3rd Floor Orange Tower,
72201, Ebène Cybercity,
Mauritius.

Tel: +230 466 6830

Fax: +230 466 7197

Email: commerciale@maureva.com

Website: www.maureva.com